



**Earnest**

# Core Parts Line Card

***Contact Us!***

- **EarnestMachine.com** • **+1 (800) 327-6378** •
- **Inquiry@EarnestMachine.com** •



## Who We Are

Earnest Machine is a trusted master distributor of fasteners, serving the industrial distribution market with expertise and reliability.

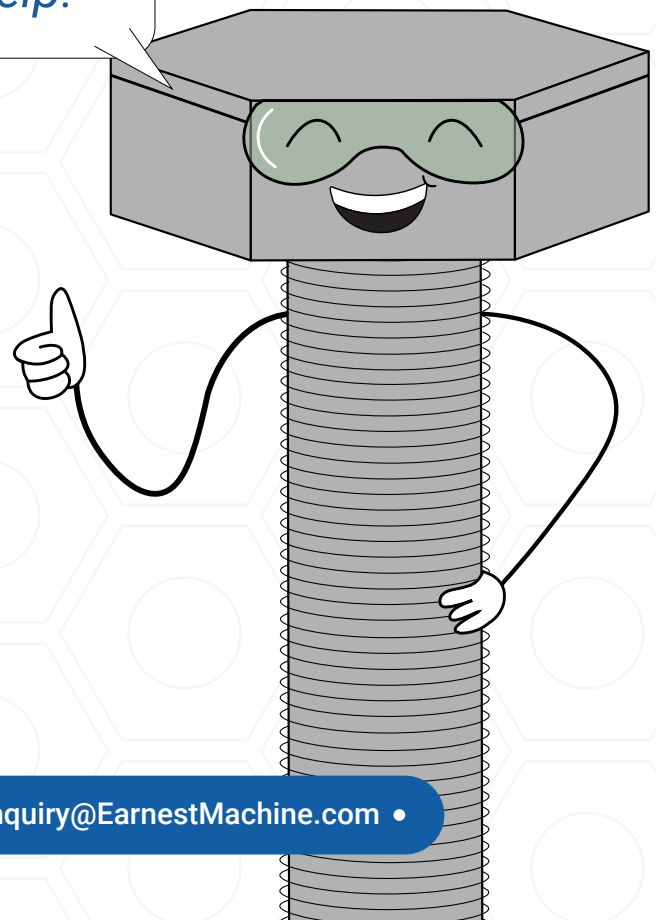
Our robust lineup of core products and secondary services is designed to give you more options, unlock opportunities, and make managing your fastener program a breeze.

With modern distribution centers located in Indianapolis and Georgia, we're all about keeping things running smoothly for you. Need custom packaging, blanket orders, kitting, or secondary services? We've got you covered with turnkey solutions that make life easier for industrial distributors like you.

## Our Mission

At Earnest Machine, we're driven by a single mission: to create the best customer experience possible by putting your needs first. Every product, service, and solution we offer is designed with your success in mind, ensuring you have the tools and support to thrive in a competitive market.

*We're here  
to help!*



### Bolts



STANDARD NECK  
CARRIAGE BOLTS



SHORT NECK  
CARRIAGE BOLTS



RIBBED NECK  
CARRIAGE BOLTS



FLAT HEAD  
CARRIAGE BOLTS



#3 FLAT AND DOME  
HEAD PLOW BOLTS



#7 HEAD PLOW BOLTS  
(BUCKET TOOTH BOLTS)



CLIPPED HEAD  
PLOW BOLTS



USA MADE  
METRIC HEAVY  
HEX FLANGE BOLTS



SQUARE HEAD BOLTS



HEX HEAD  
BOLTS



T-HEAD BOLTS



PLACE BOLTS - TYPE AA



HOOK BOLTS



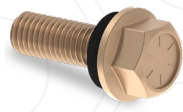
COIL BOLTS



HEX HEAD TAP BOLTS



MACHINE BOLTS



GRAIN BIN BOLTS

### Screws



USA MADE HEX  
FLANGE SCREWS



NON SERRATED  
HEX FLANGE SCREWS



HEX SERRATED  
FLANGE SCREWS



HEX HEAD  
CAP SCREWS



12-POINT  
FLANGE SCREWS



HOT DIPPED GALVANIZED  
HEX FLANGE LAG SCREWS



MACHINE SCREWS



SHEET METAL SCREWS  
(TYPE A, AB AND B)



THREAD CUTTING  
SCREWS

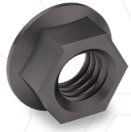


SELF-DRILLING  
SCREWS

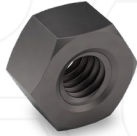


TIMBERJACK PREMIUM  
TIMBER SCREWS

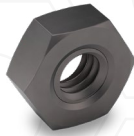
### Nuts



NON SERRATED  
HEX FLANGE NUTS



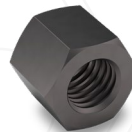
FINISHED HEX NUTS



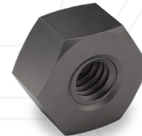
HEX JAM NUTS



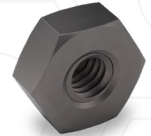
HEX THICK NUTS



HEX HI NUTS



HEAVY HEX NUTS



HEAVY HEX JAM NUTS



SLOTTED HEX NUTS



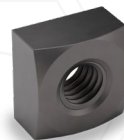
HEAVY HEX  
SLOTTED NUTS



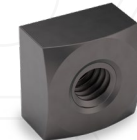
SLOTTED HEX  
JAM NUTS



HEX CASTLE NUTS



SQUARE NUTS



HEAVY SQUARE NUTS



HEX COIL NUTS



HEX COUPLING NUTS



TEE NUTS  
(3- AND 4-PRONG)



WING NUTS

### Lock Nuts



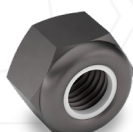
HEX SERRATED  
FLANGE LOCK NUTS



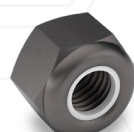
ALL METAL HEX  
FLANGE LOCK NUTS



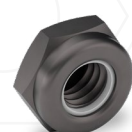
NYLON INSERT HEX  
FLANGE LOCK NUTS



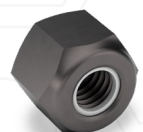
NYLON INSERT HEX  
LOCK NUTS - NE



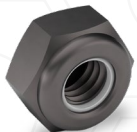
NYLON INSERT HEX  
LOCK NUTS - NM



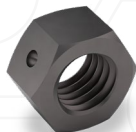
THIN HEX NYLON  
INSERT LOCK NUTS - NTE



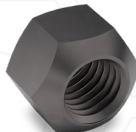
HEAVY HEX NYLON  
INSERT LOCK NUTS - NU



THIN HEAVY HEX NYLON  
INSERT LOCK NUTS - NTU



2-WAY CENTER  
LOCK NUTS



ALL METAL  
LOCK NUTS



TWIN WHIZ  
LOCK NUTS



KEPS LOCK NUTS



CONICAL KEPS  
LOCK NUTS

## Washers



SAE FLAT WASHERS



SAE HARDENED  
FLAT WASHERS



SAE HARDENED  
THICK FLAT WASHERS



SAE EXTRA THICK  
HARDENED FLAT  
WASHERS



USS FLAT WASHERS



USS HARDENED  
FLAT WASHERS



USS HARDENED  
THICK FLAT WASHERS



USS EXTRA THICK  
HARDENED FLAT WASHERS



F436 HARDENED ROUND  
STRUCTURAL WASHERS



EXTRA THICK  
FENDER WASHERS



HELICAL SPRING  
HEAVY LOCK WASHERS



HELICAL SPRING  
REGULAR LOCK WASHERS



HELICAL SPRING  
LIGHT LOCK WASHERS

## Anchors



TOGGLE  
WING NUTS



HAMMER DRIVE  
ANCHORS



FLAT HEAD SPLIT  
DRIVE ANCHORS



MACHINE SCREW  
ANCHORS



## KMC Clips and Clamps



**HEAVY DUTY TUBE  
CLAMPS - KMC CC**



**VINYL HEAVY  
DUTY TUBE  
CLAMPS - KMC CCV**



**DOUBLE TUBE  
CLAMPS - KMC CD**



**DOUBLE TUBE CUSHION  
CLAMPS - KMC CDL**



**VINYL DOUBLE TUBE  
CLAMPS - KMC CDV**



**FLARED EDGE  
CLAMPS - KMC CF**



**VINYL FLARED EDGE  
CLAMPS - KMC CFV**



**HALF CLIPS  
KMC CH**



**VINYL HALF  
CLIPS - KMC CHV**



**J-CLIPS  
KMC CJ**



**VINYL J-CLIPS  
KMC CJV**



**DOUBLE PIPE  
CLAMPS - KMC CM**



**VINYL DOUBLE PIPE  
CLAMPS - KMC CMV**



**WIRING AND  
TUBE CUSHION  
CLAMPS - KMC COL**



**VINYL WIRING AND TUBE  
CLAMPS - KMC COV**



**WIRING AND TUBE  
CLAMPS - KMC CO**



**LIGHT DUTY VINYL  
WIRING AND TUBE  
CLAMPS - KMC CWV**



**LIGHT DUTY  
WIRING AND TUBE  
CLAMPS - KMC CW**



**CONCAVE EXPANSION  
PLUGS - KMC PC**

**Earnest Machine is an Authorized  
Master Distributor of KMC Clips and  
Clamps, proudly made in the USA.**



## Can't Find What You're Looking For?

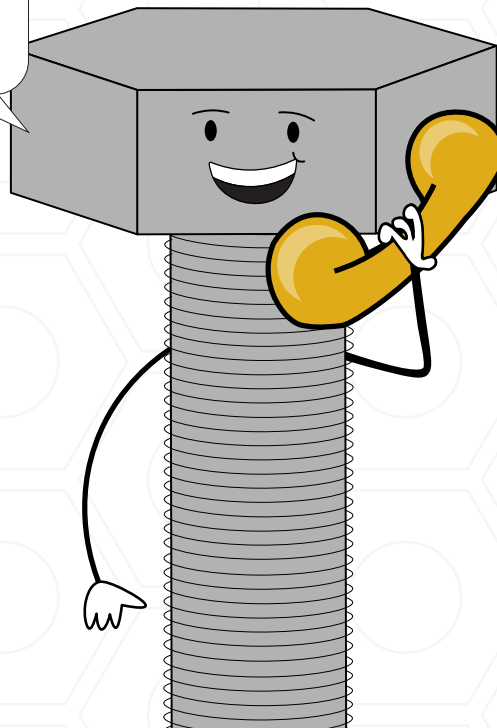
Don't worry—we're here to help! Whether you need assistance finding the right fastener, have questions about secondary services, or just want to chat about your options, our team is ready to jump in.

Give us a call at **+1 (800) 327-6378**, and you'll connect with real people who know fasteners inside and out.

Prefer to browse at your own pace? Visit **EarnestMachine.com** to explore our product offerings, services, and more.

At Earnest Machine, we're all about making your experience seamless and stress-free. Let us know how we can help you today!

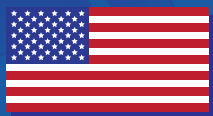
*Earnest Machine?  
I'd like to place  
an order!*





# Earnest

**Earnest Machine offers a wide selection of **high-quality** fasteners. Browse our full selection to find exactly what you need!**



## **Earnest Machine Headquarters**

1250 Linda Street  
Suite #301  
Rocky River, Ohio 44116

**Visit us on the Web**  
[EarnestMachine.com](http://EarnestMachine.com)

**For Inquiries Email**  
[Inquiry@EarnestMachine.com](mailto:Inquiry@EarnestMachine.com)

**Speak with Our Team**  
+1 (800) 327-6387



## **Earnest Machine United Kingdom**

Unit 3A, Millbuck Industrial Estate  
Shaw Road Bushbury  
Wolverhampton West Midlands, England  
WV10 9LA

**For Enquiries Email**  
[UKEnquiry@EarnestMachine.com](mailto:UKEnquiry@EarnestMachine.com)

**Speak with Our Team**  
+44 (0) 1902 711041