

 *From Print to Production*

# Understanding “Part-to-Print” Fasteners & How We Quote Them

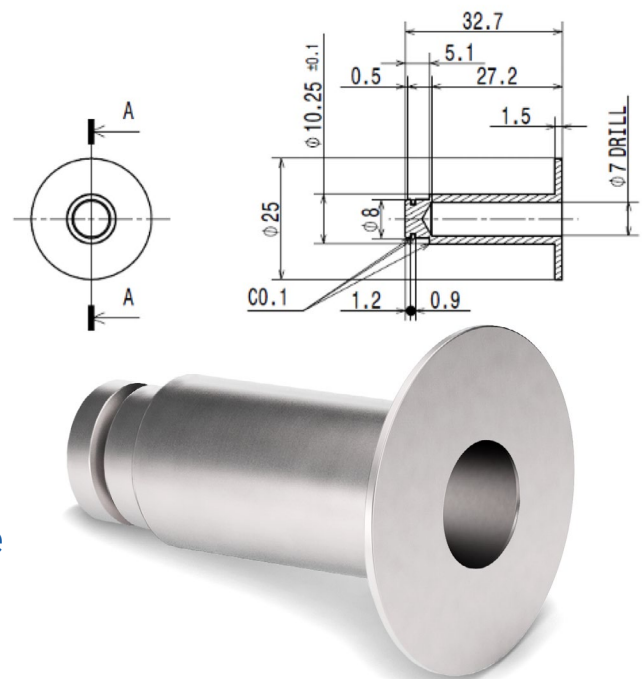
## What Is a “Part-to-Print?”

The term **Part-to-Print** is commonly used in the fastener industry to describe a custom part that is manufactured to match the exact specifications outlined in an engineer’s drawing. Often, these parts are designed for specific applications or made from unique materials that are not typically stocked. This creates a need for custom manufacturing, where the part must be produced according to the exact dimensions, materials, and performance requirements outlined in the drawing.

Navigating the process of sourcing custom parts can feel complex, especially when factoring in material grades, finishes, strength requirements, and lead times. That’s where Earnest Machine comes in. Our team can help you determine if your part is a standard fastener or if it requires custom manufacturing.

If a custom part is needed, we’ll work with you to identify the most efficient and cost-effective sourcing option. This may include utilizing Earnest Machine’s machining capabilities or leveraging our trusted network of global suppliers to find the right solution for your needs.

This document will guide you through the key information we need to accurately quote and procure your custom part, ensuring the process is clear, efficient, and tailored to your needs.



Custom Vented Head Pin

## What's Needed for a Quote?

### Dimensional Specifications

When requesting a quote for a custom part, we typically receive information in one of three ways:

- A customer-provided technical drawing or standard
- A written description of the part
- A photograph of the part

No matter how you submit your request, providing complete and accurate dimensions will help us quote your part correctly. Typically these dimensions will include:

- Thread Diameter
- Thread Pitch
- Overall Length
- Thread Length (Full Thread or Partial Thread)
- Head Style Description

If you have a technical drawing, it will typically contain all of this information. However, if a formal drawing is not available, a rough hand sketch is still helpful. Additionally, a clear photo of the part is also helpful. When submitting a photo, ensure good lighting and capture multiple angles. Be sure to include any critical dimensions and tolerances so we can accurately quote your part. The more detail you provide, the better we can understand and meet your needs.

**To make quoting easier, we've included a Part-to-Print Project Guide on page 5.**

If you plan to send us a picture, simply fill out this form and place the part on the grid provided. This will give us a better sense of scale and help us quote your part more accurately.

## What's Needed for a Quote? (cont.)



### Material or Grade

If your customer just provided you with a written description, make sure their description includes the material or grade. Knowing the grade tells us what type of material should be used for the part. If the grade is not provided, let us know what material, hardness, or strength level is required. A technical drawing will typically have this information.

### Finish/Plating

Is a plain finish acceptable, or is a coating or plating required? The type of plating needed and its thickness can affect the tolerances on the dimensions and can affect the thread fit. Including the plating requirement at the time of quoting ensures that lengthy delays are not encountered when an order is placed.

### Quantity

Whether you need one piece or one million pieces, knowing how many parts you need helps us find the most cost-effective sourcing option. Smaller quantities may be best suited for domestic machining, while larger volumes may benefit from international sourcing.

### Lead Time

Knowing when you need the parts is important when we are dealing with non-stock items or parts to a print. How quickly the parts are needed helps us to determine what source of manufacturing we can use. If you need the part quickly, we may utilize Earnest Machine's machining capabilities or work with one of our domestic suppliers to meet your timeline. If the parts are not needed immediately (and if the quantity warrants it), we can quote international resources.

## Types of Files You Can Send Us

If you have an engineer's print for a part, providing a clear and legible digital file is essential for an accurate quote. We accept JPEG (.jpg) and PDF (.pdf) files, as long as the resolution allows us to easily read the details both on screen and in print.

A high-quality print ensures we can properly assess all necessary specifications, including dimensions, thread details, tolerances, and material requirements. If the drawing includes notes on coatings, treatments, or special machining, be sure those details are clearly visible as well.

### Before submitting your file, double-check the following:

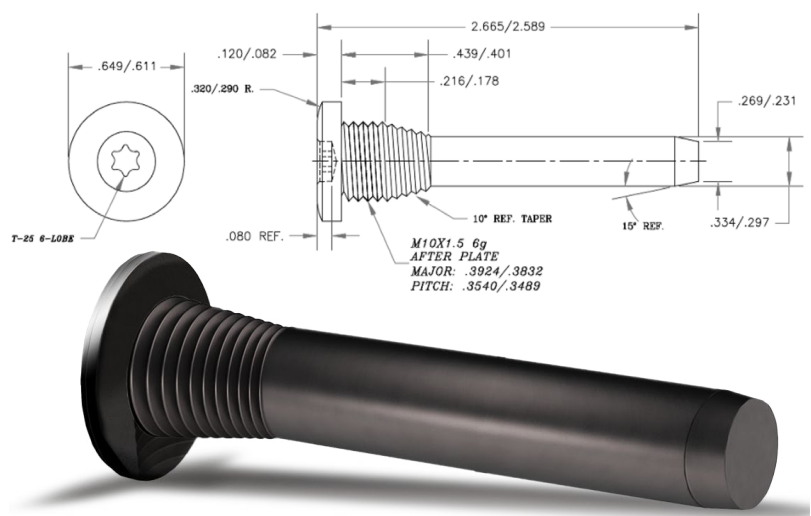
- The resolution is high enough for all details to be legible
- The file is in .jpg or .pdf format
- Any special requirements or notes are clearly included

If you are unsure whether your file meets these requirements or need assistance, we are happy to help. Our team is ready to guide you through the process!

### Contact Us Today:

Call: +1 (800) 327-6378

Email: [inquiry@earnestmachine](mailto:inquiry@earnestmachine)



M10 Cone Threaded Pin



Part-to-Print Project Guide

Quantity		Date Due		Part Type	
Diameter	Length		Thread Pitch		Thread Length
Material		Grade		Plating	

Fastener Head Type:



Nut Type:



Have a Sample Part? Send Us a Picture!

Simply print this page on an 8.5" x 11" piece of paper and place your part on the grid below and take a picture.

This will give us an idea of the part's scale. For larger parts, place the part on a flat surface with this sheet in the frame.

